

Our Fleet & Capabilities

- 2 Geoprobe® 7822 DT Rigs
- 3 Geoprobe® 7720 DT Rigs
- 2 Dingo Drill/DPT Rigs
- Rigs for Soft Dig
- Test Pit/Excavation Services
- Well Rehab
- Injections
- Monitoring Wells
- Soil Borings
- Abandonment and Repair
- Manual Soil & Groundwater Sampling (basements, tight spaces)
- Geotechnical Services

Geophysical Services

- Locate buried utilities in order to ensure personal safety and to protect private property
- Interpret the history and geology of project sites through data points
- Locate specific targets to test related to geology, excavations, fill, or proximity to a contamination source

Contact Us

office: 609-758-9000
 carol@epi-team.com

for proposals:
 brian@epi-team.com

for online inquiries:
 proposal request form

for scheduling:
 tony@epi-team.com

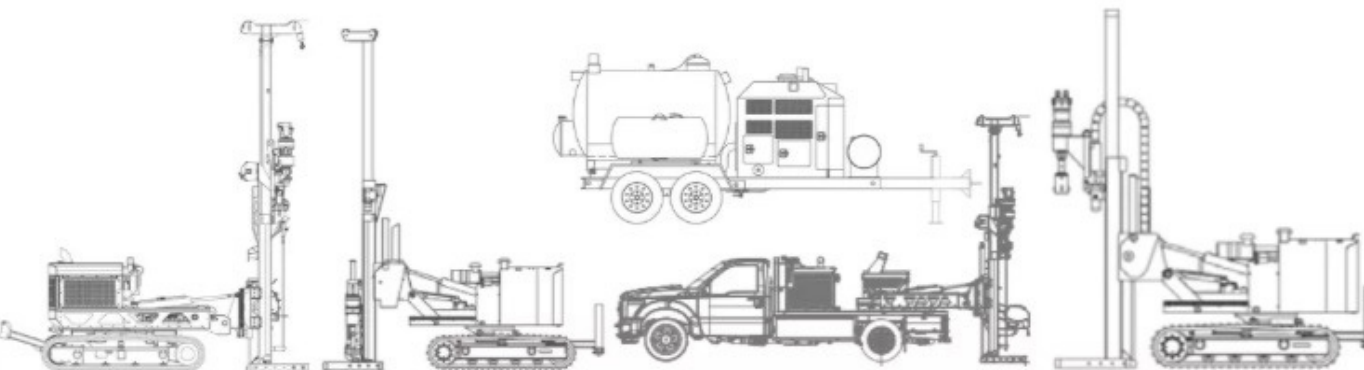
for epi-geo services:
 paul@epi-geophysics.com

websites:
 www.epi-team.com
 www.epi-geophysics.com

social media:



We're the region-leading company for environmental drilling



Our environmental drilling and geophysical crews are highly trained to comply with the latest industry and environmental laws and regulations.

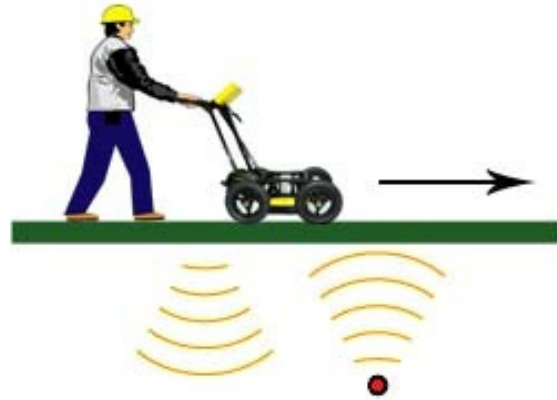
Our Mission

Since 1994, Environmental Probing Investigations continues to deliver the highest quality drilling services in the Mid-Atlantic region for environmental consultants and their clients. By providing our drillers with reliable equipment and up to date information, EPI's highly experienced and fully licensed drillers can focus on the goal of each project with utmost regard to OSHA safety and EPA requirements in the direct push and geophysical fields and other related drilling services. EPI extends friendly relationships to our customers by collaborating on exact project specifications and expectations with the EPI interactive project module and at each job site. We pride ourselves on creating a positive work environment where all employees can receive the support needed to be at their strongest.



MAINTAIN SCHEDULES, AVOID COSTLY REPAIRS AND LIMIT RISK*

Our **geophysical services** may be applied to residential, commercial and industrial sites in order to locate underground utilities (electric lines, water lines, telephone lines, sewer lines, gas lines, buried tanks, and more)



Basic Principles of Ground Penetrating Radar

”
**SAFETY
FIRST IS
SAFETY
ALWAYS**
“

SAFETY AT EPI

We believe that safety is best achieved using a proactive approach which begins with training. We work in conjunction with all of our clients and equipment manufacturers to achieve the highest goals possible each day while virtually eliminating any possibility of danger.

